

LOCAL ECONOMIC DEVELOPMENT ENGINE



WHAT IS A LOCAL ECONOMIC DEVELOPMENT ENGINE (LEDE)?

- » An inclusive process for citizens and government officials to develop an economic development strategy
- » Implemented through a technical unit in the municipal government dedicated to conducting activities to stimulate or maintain economic activity

POTENTIAL BENEFITS

- » To increase income and improve quality of life through the creation of favorable conditions for employment
- » Highly consultative and participatory—actively engages economic development stakeholders
- » Adaptable to all economic development climates

PROCESS



IDENTIFY MUNICIPAL ECONOMIC OBSTACLES

through surveys, focus groups or by reviewing reports generated by local or national actors



DEFINE PRELIMINARY LEDE OBJECTIVE

based on the overarching goal of eradicating poverty and increasing employment

EXAMPLE LEDE OBJECTIVES

- » Stimulate local economic development broadly
- » Take advantage of local geographic features to promote tourism
- » Promote youth employment
- » Develop local strategies to implement national level economic development mandates



IDENTIFY A LEDE COORDINATOR

LEDE COORDINATOR

The LEDE coordinator should be a dynamic individual who is highly responsible and organized, works well with diverse audiences, and can take initiative—typically someone with experience in economic development, tourism or public administration



HOLD A STAKEHOLDERS MEETING

with municipal officials, including elected leaders and service department directors to confirm support for LEDE



ESTABLISH FORMAL COMMITMENT

through a resolution, regulation, decree or other official government process that assigns funding and reaffirms inclusive support for the initiative



BUILD EXTERNAL SUPPORT

for the LEDE initiative by conducting outreach to and developing partnerships with private businesses, civil society organizations, local cooperatives, schools/universities and other interested actors



DEVELOP A LEDE STRATEGIC PLAN

through strategic planning workshops and roundtables with municipal officials and external stakeholders to outline a plan that contains commitments from all stakeholders and activities the LEDE will carry out



COMMUNICATE RESULTS

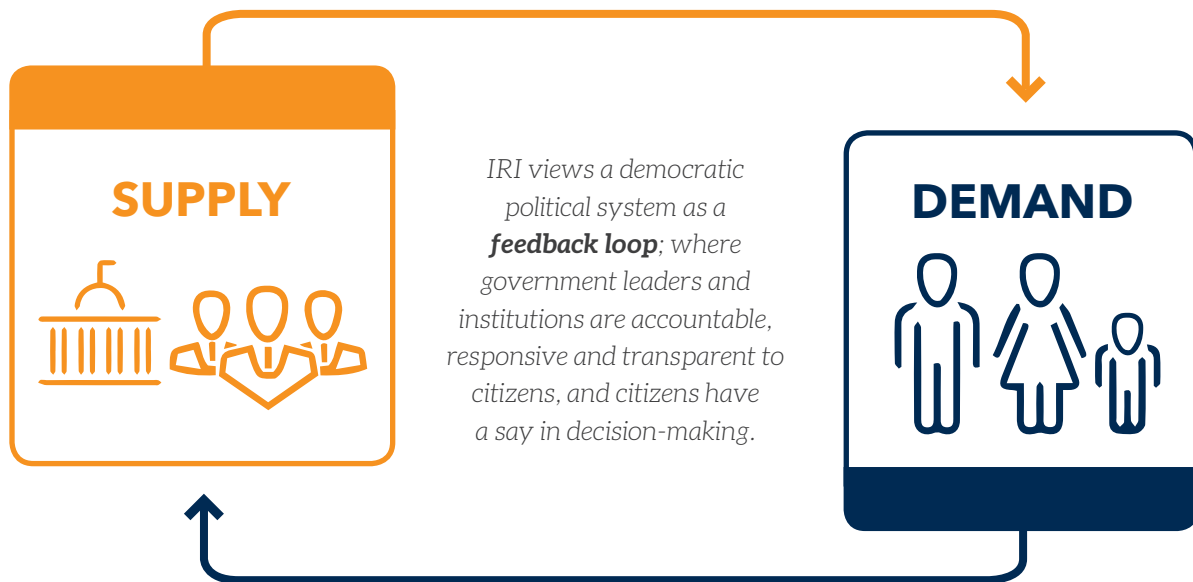
of the LEDE as a whole and the specific outcomes of the action plan, including clear data such as the number of new jobs created, job seekers trained, or collaborative projects completed



OUR GOVERNANCE APPROACH

Citizen confidence in government institutions is critical for a strong, sustainable democracy.

Where governments are unable or unwilling to fulfill citizen needs, the democratic process is undermined and risks becoming a democratic façade. IRI works with government officials, citizens and civil society to bring government closer to citizens, transforming it into a more responsive, transparent and effective institution that is representative of—and accountable to—its citizens.



ADVANCING DEMOCRACY WORLDWIDE

IRI advances freedom and democracy worldwide by helping political parties to become more issue-based and responsive, assisting citizens to participate in government planning and working to increase the role of marginalized groups in the political process—including women and youth.

For more information,
please contact governance@iri.org
www.iri.org | @IRIglobal